

GIS Governance at the City of Austin

Marna McLain, IT Manager Senior
Enterprise Geospatial Services

City of Austin Corporate Limits

Prepared by: Department of Planning and Development



Agenda

- Journey of GIS Governance
- Current State | GIS at City of Austin
- Geospatial Information Management Operating Board (GIMOB)
- Considerations for GIS Governance

Please note...



1977 - 1979

Austin, TX: Pop. 341,000

Computerized Interactive Graphics System 1978

Goodbye T-square; hello CRT

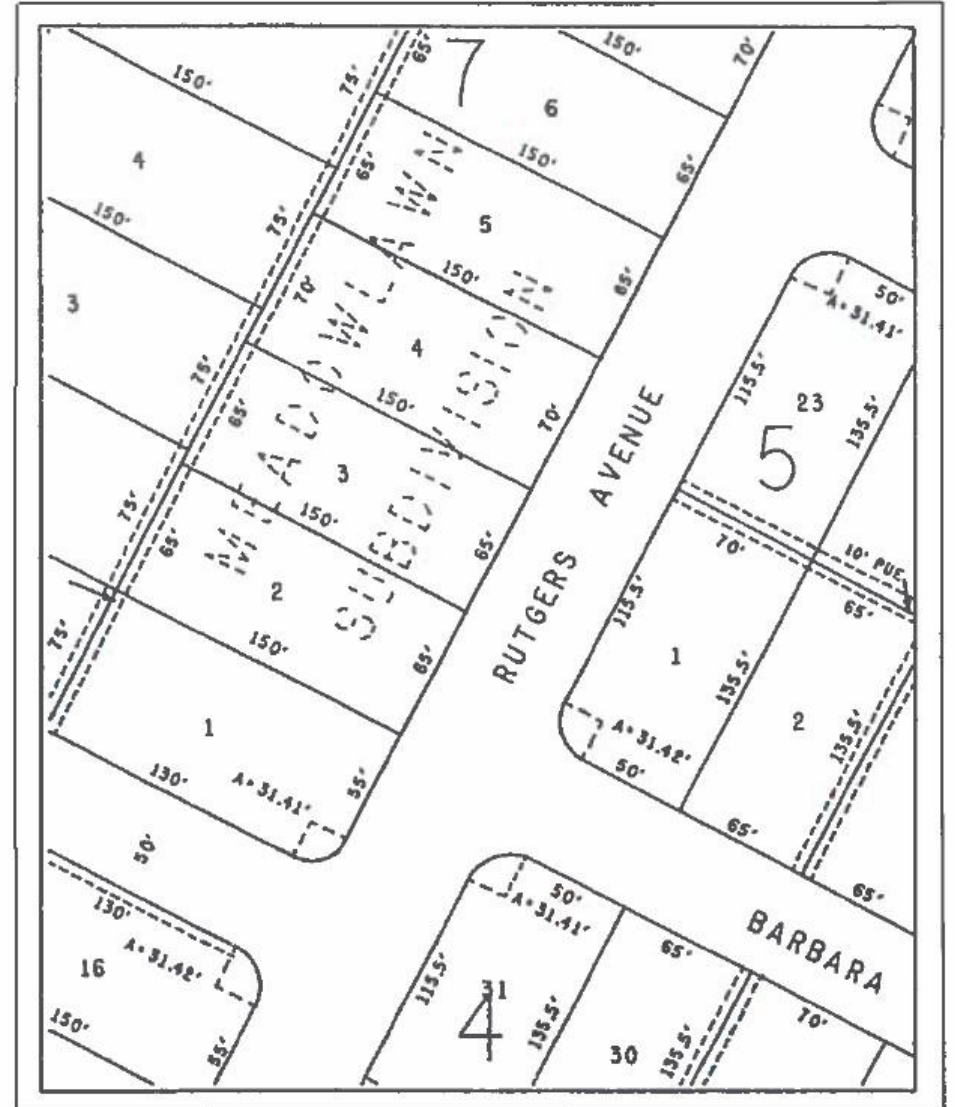
A new automated mapping system allows Austin, Texas, to update city maps more efficiently, to produce more useful maps for various departments, and to cut drafting and reproduction costs.

By Henry E. (Mac) Mecredy, Jr.
Supervisor, Computer Graphics
Engineering Department
Austin, Texas

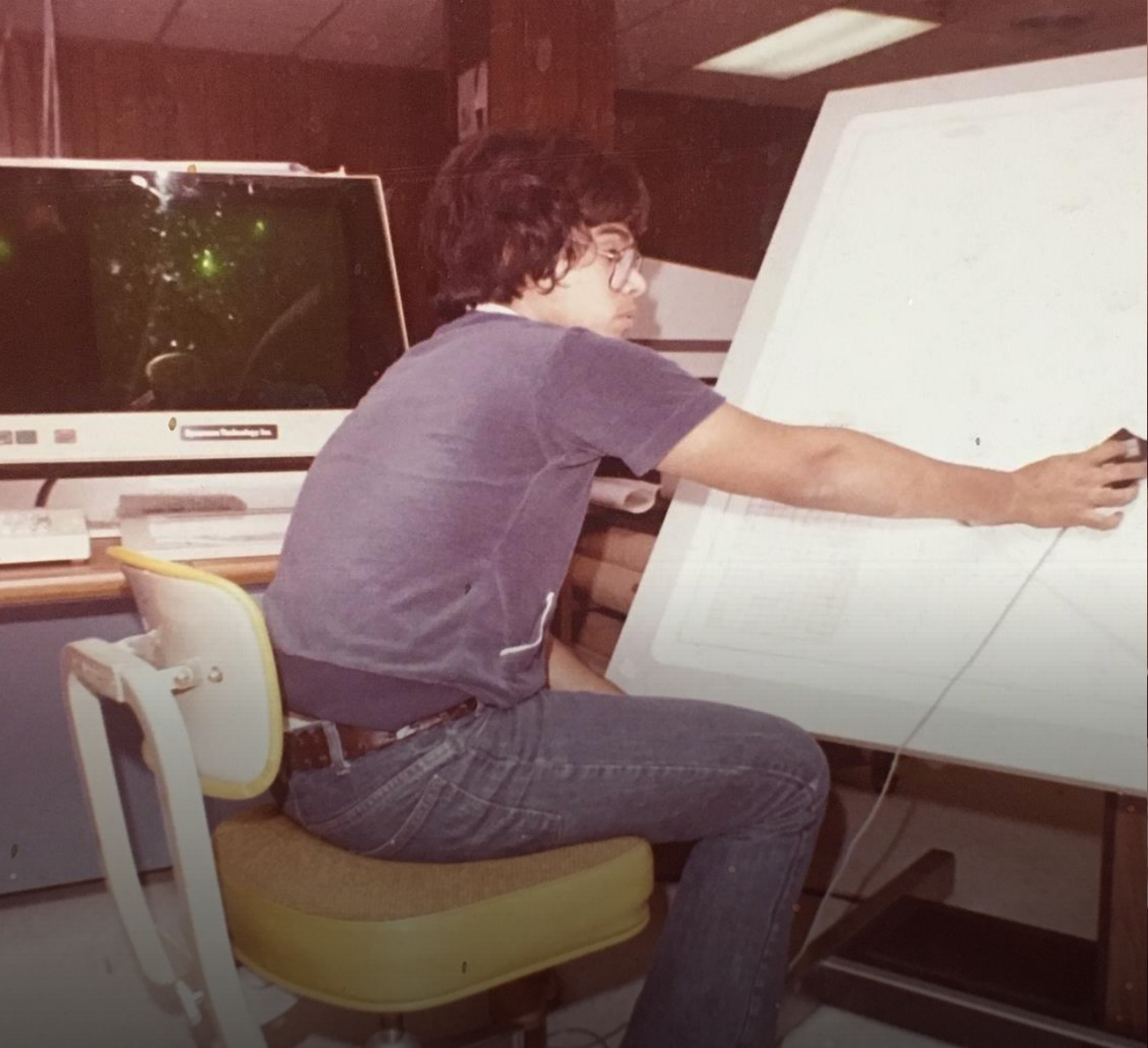
Some compared it to the LaMaze method of natural childbirth. After many months of anticipation, those of us who thought we wanted it most suddenly found ourselves breathing heavily, sweating in the dark, and wondering if we really wanted to be in our current fix. Now, two years later, we are beginning to feel comfortable with a new family member, and to feel confident that it will bring joy to our hearts in the years ahead.

The delivery date came, after many months of anticipation, in late November 1978. The new arrival was an automated system for handling what had become a major item of work for the City of Austin: mapping.

Austin became the capital of Texas in November 1839. By 1940, its population was 88,000, housed in some 31 square miles. In 1980, at least 350,000 city residents live in the 126 square miles now inside the city limits. In addition, under state law, the city exercises jurisdictional control over subdivisional planning within five miles

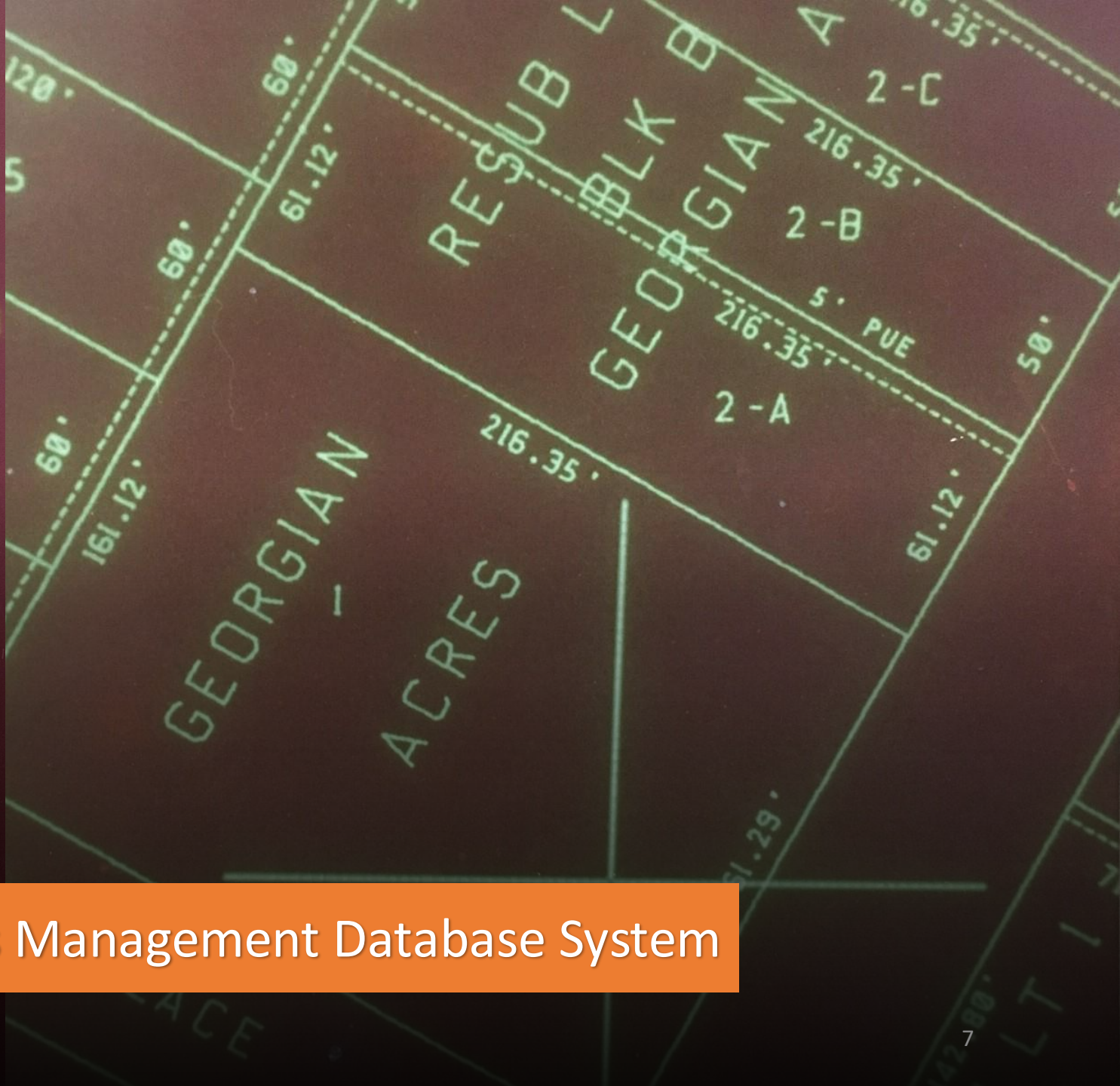


Two years in development, Austin's computerized interactive graphics mapping system can be used to create, update, combine, and reproduce maps to fit the needs of city departments.



Graphics Console Operator | Digitizer Table | CPU Room | Printer

ENTER LOCAL POLYGON NAME TO INSTALL
SEC770
POLYGON INSTALLED
DIGITIZE CENTER OF WINDOW AND ENTER SCALE
400
DIGITIZE LOWER LEFT AND UPPER RIGHT CORNERS OF WINDOW
DIGITIZE CENTER OF WINDOW AND ENTER SCALE
100
SYSTAB
ENTER KEYWORD = TABLE NAME
WHAT
MENU STISYS.MNU
MENU START.MNU
SCHEMA BASE1.SCH
SYMBOL ENGSYM.SYD
LINEDESC BASE.LTP
LINESYMB LINSYMB.LSD
SECONDAR BASE.2ND
RULES BASE.RUL
ANNOTATI BASE.ANO
DRAWING SEC770



Computerized Mapping & Facilities Management Database System

1980 - 1999

Austin, TX: Pop. 346,000 - 630,000

GIS Interdepartmental Support Services Ad Hoc Committee

1991

DRAFT REPORT (#2)
DECEMBER 16, 1991

GIS INTERDEPARTMENTAL SUPPORT SERVICES AD HOC COMMITTEE

=====

EXECUTIVE SUMMARY

This is the report of the GIS Interdepartmental Support Services Ad Hoc Committee. The committee was convened by the Directors in August, 1991 with the purpose of recommending policies and guidelines for sharing of GIS data and services among City departments. The committee has approached its task by recognizing that short term improvements to the existing situation are critical, yet linked to long term changes in the way the City conducts business. The committee has accomplished its task by exploring the issues and formulating recommendations which will improve our ability to share GIS data and services.

Barriers to sharing of GIS data and services include:

- o Inability to determine availability of useful data and services
- o Ambiguity in request making and handling procedures
- o Ambiguities in cost recovery policies and procedures

The Committee has closely examined these issues and recommended ways to reduce or eliminate barriers to sharing of GIS data and services.

Highlights of the recommendations are:

“The tremendous cost of collecting GIS data makes it imperative that we find ways to share it.”

GIS Interdepartmental Support Services Ad Hoc Committee, 1991

GIS
Interdepartmental
Support Services Ad
Hoc Committee
1991

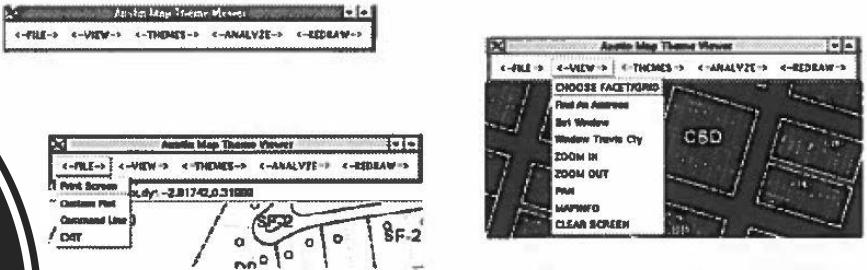
Recommendations

- Directory of GIS Services
- Directory of GIS Data
- Records Management
- Tie GIS projects to Department Business Plans
- Cost sharing for time & resources
- Consider GIS services as part of IT

Desktop
GIS
1996

What is the Viewer?

- A menu-driven system for accessing and displaying the City's GIS data resources
- Initially designed for the Development Assistance Center

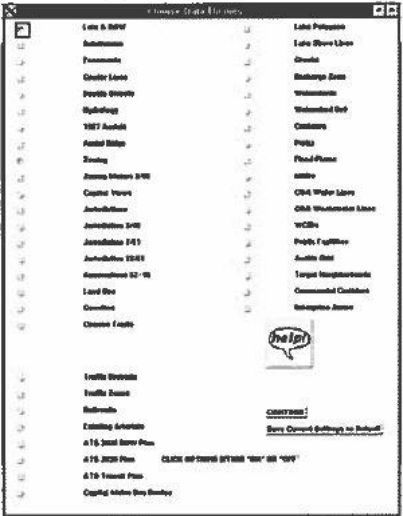


Identify Features



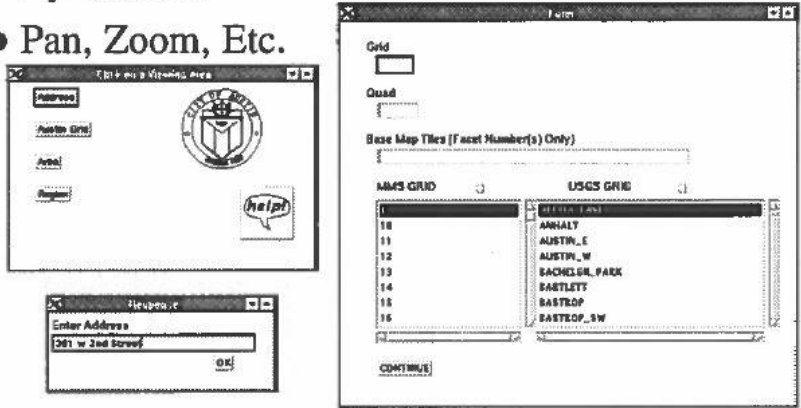
Access to 45 Layers of Data

- Point & Click access to a wide variety of data resources
- Select only the Themes you need
- Save your Default Themes for the next time



Tools for Locating Data

- Austin Grid, USGS Grid, MMS Grid
- By Address
- Pan, Zoom, Etc.



Desktop GIS

1996

Challenges for the Future



- Budget, Budget, Budget
 - Shrinking resources, expanding needs
 - Finding ways to save money through technology
- Expanding the City's GIS user base
 - The entire Department
 - Other Departments
 - The General Public
- Moving to UNIX, ARCVIEW and Client-Server
- Linking to the Internet...

2000 - 2009

Austin, TX: Pop. 774,000

Corporate GIS Project

2002



RDMT Project Office

CORPORATE GEOGRAPHIC INFORMATION SYSTEMS

PROJECT PLAN

- Authorized by City Manager
- In response to 9/11
- GIS managed by City IT Department
- Formation of GIS User Group, Corporate GIS Operating and Executive Boards

Corporate GIS Project

2002

Project Goals:

- Implement standards and improvements to GIS Infrastructure
- Identify and establish a method for coordination and management of the GIS enterprise function
- Support Homeland Security

Success factors:

- Corporate licenses managed through a single negotiated agreement
- Single GIS production database
- City-wide training plan for GIS staff
- Corporate GIS Operating Board (CGISOB)

Corporate GIS
Operating Board
CGISOB

2002

- 10 departments represented
- Corporate GIS Operating Board
 - GIS Managers and technical leads
 - Policies and procedures
- Corporate GIS Executive Board
 - Department Director level staff
 - Strategy
- Quarterly GIS User's Group meeting
- First Esri ELA - 2004

2010 - 2019

Austin, TX: Pop. 978,000

Corporate GIS
Operating Board
CGISOB

2014

- 25 departments represented
- GIS services are federated and distributed across various departments
- Centralized GIS Infrastructure, software licensing, and GIS training
- Charter, Data Standards, and various policies drafted
- Chair elected by departments
- Inspired broader IT Governance movement
- CGISOB rebranded in 2015

Austin ArcGIS Online Guidelines

Approved by the Corporate GIS Operating Board
Last edited March 12, 2019



City of Austin
Corporate GIS Operating Board

City of Austin GIS Data Standards
April 7, 2010



Geospatial Information Management
Operating Board

Corporate SDE Administration Policies



GIMOB Member Roles &
Responsibilities

2020 - 2024

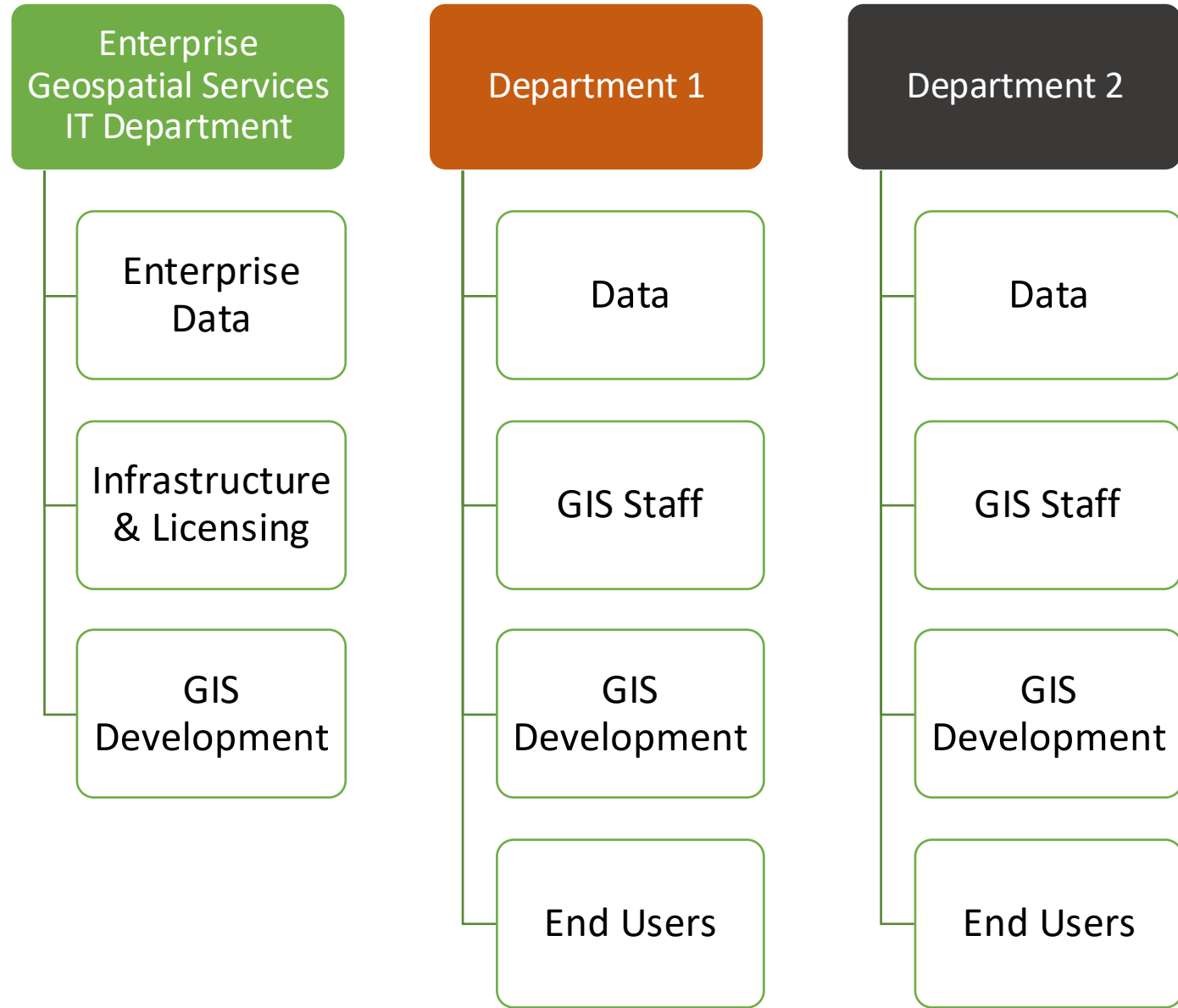
Austin, TX: Pop. 984,500

City of Austin GIS Stats 2024

- 14,000 City Employees
- 40 Departments/Offices
- 1500 ArcGIS Pro/ArcMap Installs
- 2,500 ArcGIS Online members
- 400+ feature classes, tables, and mosaic datasets
- 80+ feature services
- 80+ servers



GIS Organization at City of Austin



Geographic Information Management Operating Board

GIMOB

Mission

The mission of the GIMOB is to coordinate citywide geospatial activities to promote cooperation between departments; identify, address and attempt to resolve common problems and issues; develop geospatial standards and provide a spatial data foundation and framework.

Key Goals

- Support transparent process, consistent with City goals and priorities
- Encourage partnerships to achieve the most efficient use of resources
- Promote a better understanding of geospatial information and its capabilities

Geographic Information Management Operating Board

Geographic Information Management Governing Board (GIMGB) Recent

by promoting cooperation between departments, to identify and address common problems and issues, and to provide a spatial data

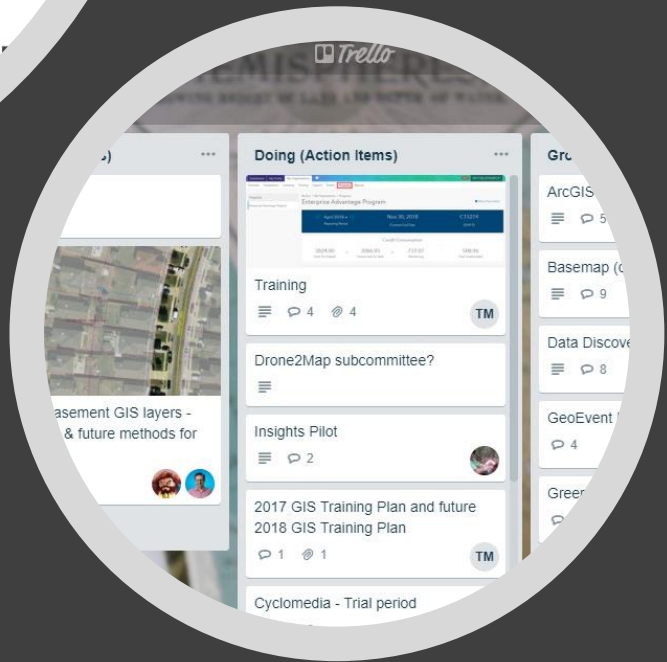
the month at Neighborhood Housing and Community Development offices.



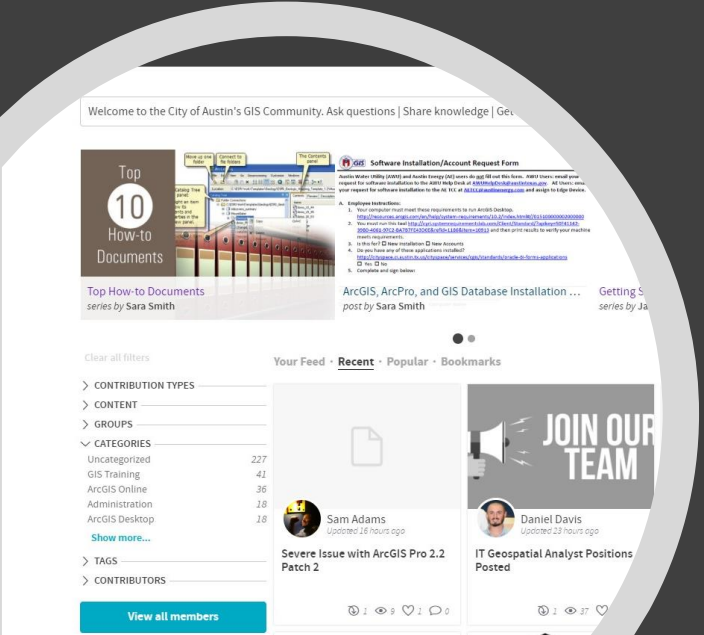
meeting info



calendar



Transparency and Collaboration





GIMOB Structure

- Chair
- Vice-Chair/Technical Advisor
- Architect Advisor
- All Other Departments Advisor
- Secretary
- Subcommittee Chairs
- GIS Single Points of Contact (GIS SPOCs)



To do (Agenda Items)

+ Add task

○ JUNE AGENDA ITEM: Presentation by Financial Services on Data Ask/Dashboard that the City Manager has Requested

Completed tasks 10 ▾

New Business

+ Add task

○ REMINDER: In-Person Meeting - June 1st at the PDC
Due [Avatar]

○ VOTING ITEM: Building Web Apps with ArcGIS Experience Builder (27 AP)
Due [Avatar]

○ VOTING ITEM: Jonathan Nations as the new Primary SPOC and Gavin Lambert as the new alternate SPOC for Municipal Court

○ VOTING ITEM: Dan Brooks to be the Alternate SPOC for the Planning Department (previously known as HPD)
Due [Avatar] EJ

○ Department Mergers

Doing (Action Items)

+ Add task

○ GIS Modernization Project 2023-04
🗨️ 🔗 7
Due [Avatar] [Avatar]

○ City wide GIS Issues: Creation New GIS Accounts/Passwords 2023-04
! 🌐 🗨️ 🔗 3 🕒 1 / 1
Due [Avatar]

Completed tasks 18 ▾

Subcommittee Reporting

+ Add task

○ ArcGIS Online 2023-05
🌐 🗨️ 🔗 4
Due [Avatar] [Avatar] [Avatar] +4

○ ArcGIS Hub 2023-05
Due [Avatar]

○ Knowledge Base 2023-05
5/4/2023
Bloomfire will be shut off at the end of May. Next meeting if Friday, May 12th. After Bloomfire decommission, they will be building out a KB page on SharePoint...
Due [Avatar] [Avatar] [Avatar] +4

○ ESRI UC Subcommittee 2023-05
🌐 🗨️ 🔗 2
Due [Avatar] [Avatar] [Avatar]

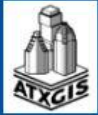
Corporate News/Project Rep

+ Add task



○ ESRI Credits
📎 credits_20230428.png
🗨️ 7
Due

○ Training
⇄ 2023 GIS Training 28



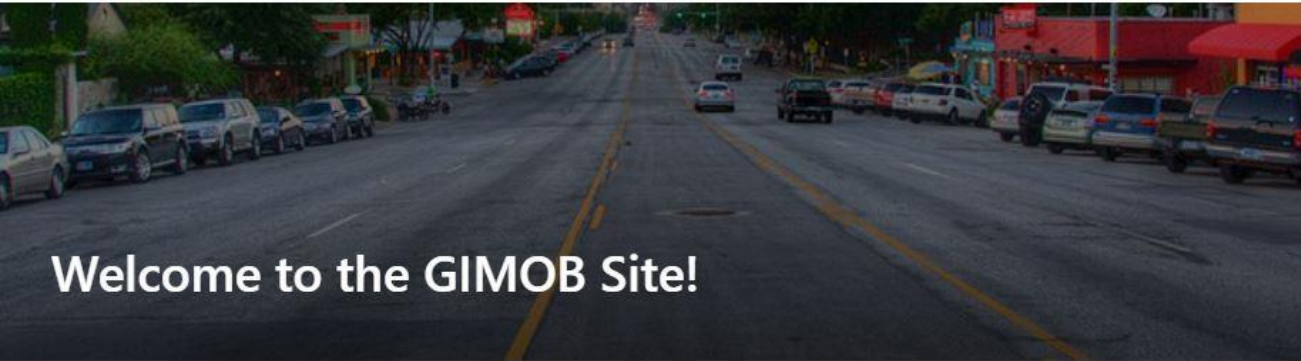
Geospatial Information Management Operating Board

[Home](#) [About](#) [Esri Resources](#) [GIS Resources](#) [Edit](#)

☆ Not following [Share](#)

+ New [Page details](#) [Analytics](#)

Draft saved 5/4/2023 [Edit](#) [Republish](#)



Welcome to the GIMOB Site!

[GIS SPOC List](#)

[GIS Training](#)

Quick Links

[🌐 GIS Data Standards](#)

[📖 COA Employee IT Guide](#)

[📄 Knowledge Base Articles](#)

[🌐 GIMOB Member Roles and Responsibilities](#)

[🌐 ATX GIS TEAM Channels](#)

[🔄 CTM Corporate GIS Homepage](#)

[🌐 City of Austin ArcGIS Online \(AGOL\)](#)

[🌐 GIS and Maps | AustinTexas.gov](#)

[👥 ATX GIS Teams Page](#)

[🌐 GIS Emergency Response Team](#)


[🌐 Austin GIS Online Governance](#)



M. Marna 5/15 1:42 PM Edited

May Virtual Esri Office Hours!

Friday, May 19th: 1:00 pm - 3:00 pm

If you have any questions about tools, workflows, or best practices for any of the Esri products or solutions, this is a great opportunity to engage with the experts. If you are interested in meeting with Laura , our Esri Solutions Engineer, comment below or send me an email

See more



5 replies from you, Vicky, and Christiane

Reply



, Thomas 5/19 1:59 PM

anyone else experiencing an AGOL outage?



, Henna 5/19 2:56 PM

checking my maps now, they seem to be functioning

Reply

Friday, May 26, 2023



 Daniel 5/26 10:36 AM

Job Posting - IT Geospatial Analyst - Watershed Protection Department

General Hello GIS Colleagues - WPD has a job advertisement posted for an IT Geospatial Analyst. This position is in IT Management and will work on a team of GIS professionals to develop and maintain WPD's enterprise GIS datasets. This position is open to all qualified candidates, so please consider and share broadly! Thank you!

Subcommittees

- IT Governance
- Map Projections
- Mobile Strategy
- Network Dataset
- Open Data Portal
- Planimetrics
- Records Retention
- Redistricting Subcommittee
- Training
- Troubled Properties
- Workflow_Manager
- AGOL_HUB
- ArcGIS Online
- ESRI UC Subcommittee
- GIMOB_Documents_Subcommittee
- Homelessness Subcommittee
- Knowledge Base
- UAV (Drone) Subcommittee
- 10-1 Reporting
- Automated Vehicle Location
- Basemap
- Cartography Style Guide
- Data Organization
- Data Standards
- Electronic Data Submittals
- Esri ELA
- GeoEvent
- GIS_Remote_Work
- inactive_Linear_Referencing

GIS Governance

Successes

- Formal Charter, standards, and policies
- Planner Board and SharePoint site for increased transparency
- Subcommittees to tackle specific issues and make recommendations
- Enterprise GIS considers input from the GIMOB
- Shared vision with GIS Strategic Roadmap
- Better departmental collaboration
- Change Management

GIS Governance

Current Challenges

- Different skill levels among SPOCs
- SPOC level in an organization
- Responsibilities of SPOC are in addition to daily workload
- Difficult to prioritize needs of many
- No formal budget assigned
- Keeping up with changing technologies
- Cost of technologies and support
- Governing Board role is in review

GIS Governance

Considerations

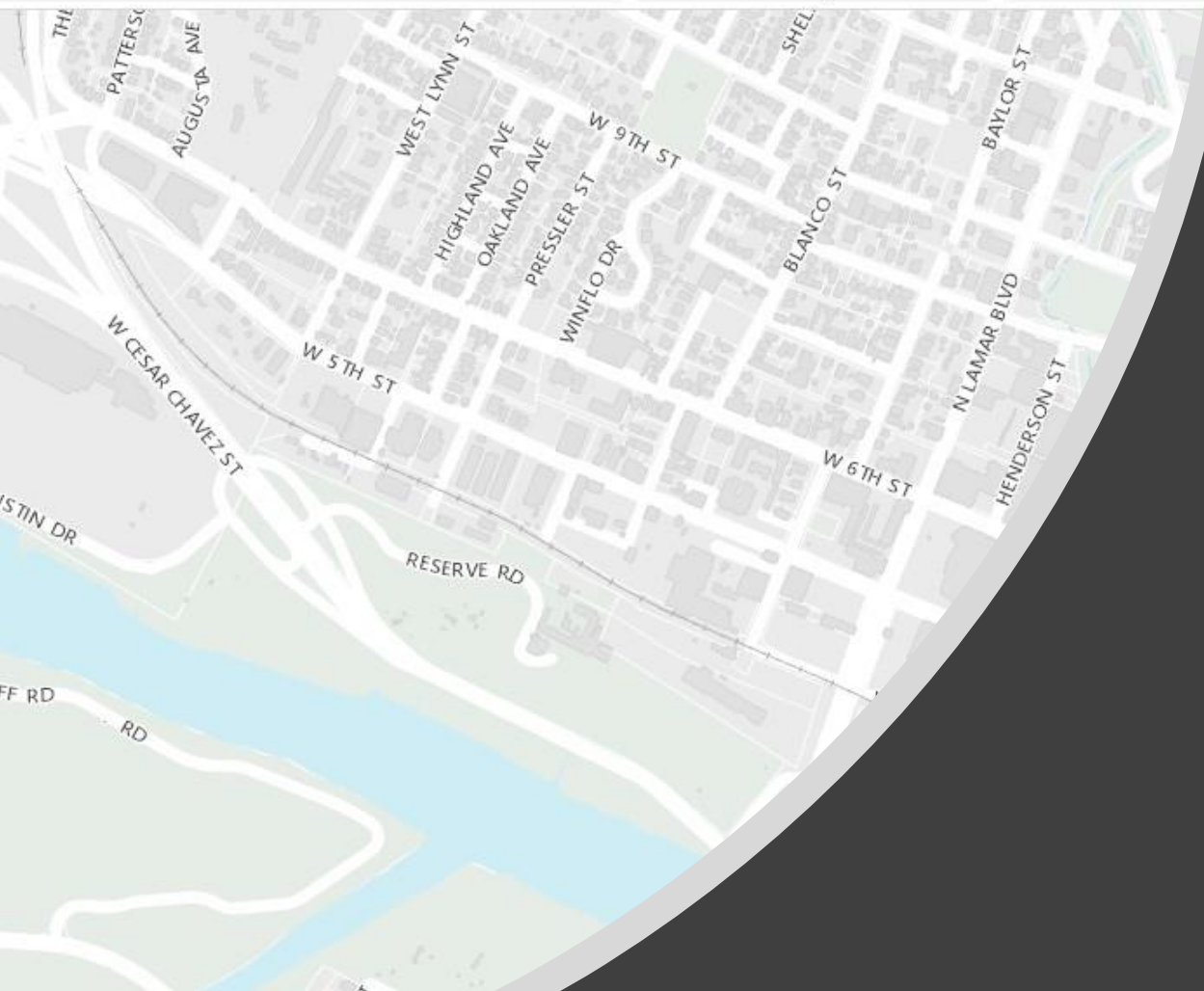
- Start small
- Reach out to other organizations to see how they are doing it
- Work on issues with impacts across the organization
- Collaborate to develop policies
- Try different methodologies to manage governance
- Know that governance will need to adapt in order to survive

Property Profile

ing Around Search & Identify Data Drawing & Measurement Printing & Reporting Help

Home Search Find Review Case Parcel Search Permits By Address Change visible map layers Historic Layers Point Query

Search Find Layers Find Data



Thank you!

Marna McLain, IT Corporate Manager
Enterprise Geospatial Services
marna.mclain@austintexas.gov